

Quick Setup Guide

4MP Wi-Fi Bullet Outdoor Camera

Model: ASH43-W



How can we help?

We are dedicated to providing the highest quality support to our customers and are available 7 days a week.

[Online Video Tutorial & Quick Start Guide](#)
amcrest.com/support

Need help?

amcrest.com/contact
1-888-212-7538

2

01 Setting Up the Camera

The Amcrest Smart Home app connects your Amcrest camera to your Android or iOS mobile device, ensuring you are always connected to what matters most.



To get the app, search for "Amcrest Smart Home" in the Google Play or App Store

Note: To add your device to the Amcrest View Pro app you must complete setup on the Amcrest Smart Home app first.

For more information, please visit amcrest.com/support

3

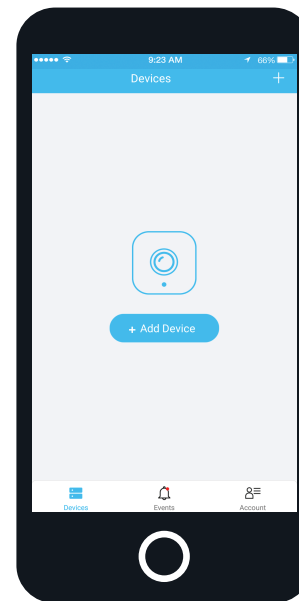
Connecting to the SmartHome app

Important: Please complete the entire initial setup in close proximity to your WiFi router to ensure a stable connection.

Ensure your device is powered using the included power supply and open the Amcrest Smart Home app.

Tap on "Register" to register an account. After registering an account, log into the app and tap "Add Device".

You will need to allow all notification and location permissions to allow the camera to connect to your mobile device.

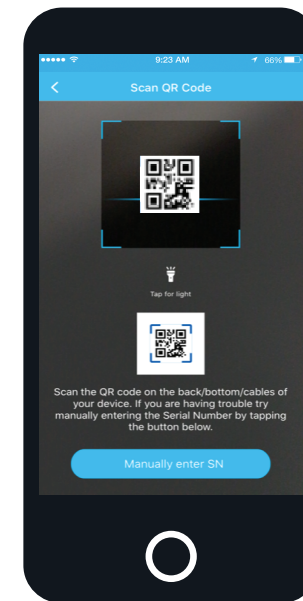


4

Scan the QR Code or Manually Enter the S/N

Scan the QR code located on the bottom of your camera.

If you are unable to scan the QR code you can manually enter the serial number by tapping "Manually enter SN".



5

Choose Your Setup Method

Choose between Wi-Fi and Ethernet Only Setup. Please note, the camera can **only** function on either a Wi-Fi or Ethernet connection, the camera cannot connect to both.

Wi-Fi (Recommended)

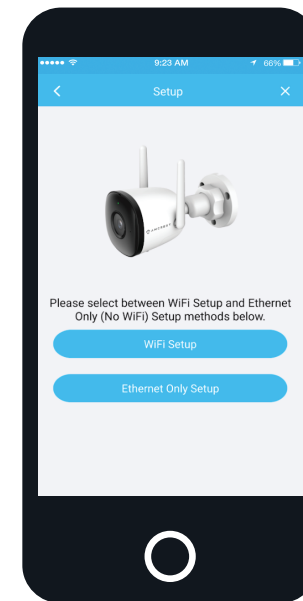
This method allows you to connect the device to your network via Wi-Fi using the camera's built-in Wi-Fi hotspot.

Ethernet Only

This method uses an Ethernet only connection to connect to your device to the network.

Follow the in app instructions to complete setup.

Note: Your camera must be on the same network as your mobile device during either setup method.



6

02

Camera Features

Devices

Displays added devices in the app.

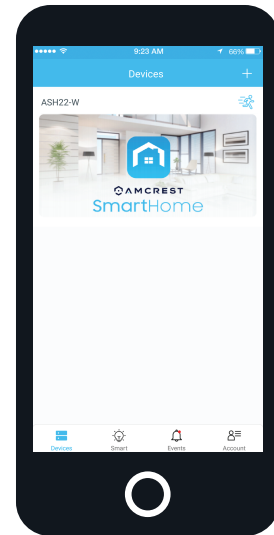
Events

Provides quick access to motion events and alerts.

Account

Manage account settings and information.

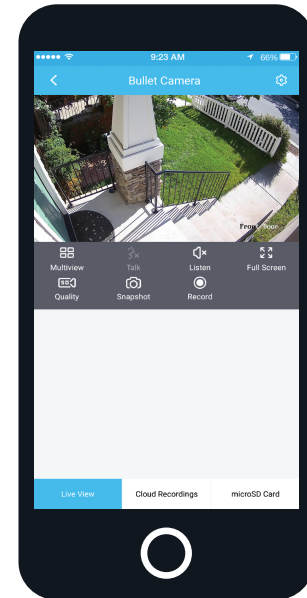
The main screen on the Amcrest Smart Home app will be your Devices menu. This menu displays all of your added devices.



7

Built-in Microphone

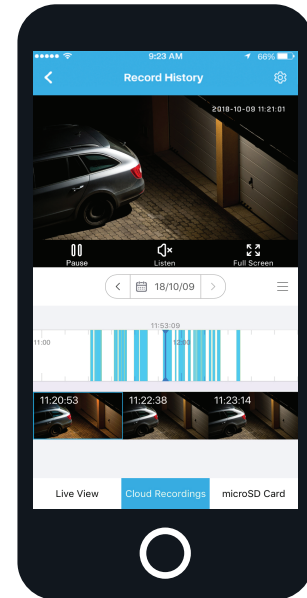
Use the built-in microphone feature to listen to what matters most, anytime, anywhere.



8

SmartHome Cloud Storage

Use the Amcrest Smart Home premium cloud service to view, record and playback events from a secure, off-site location.

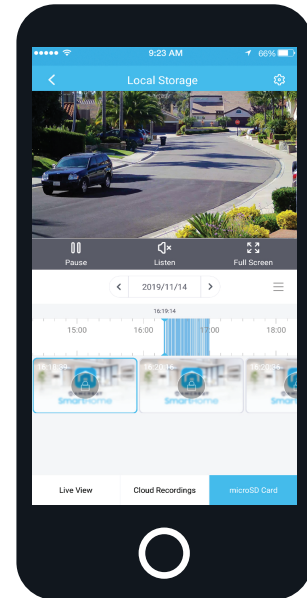


9

MicroSD Card Storage

A MicroSD card can also be used to record and playback events locally.

Note: The MicroSD card must be class 10 or higher and formatted to FAT32.

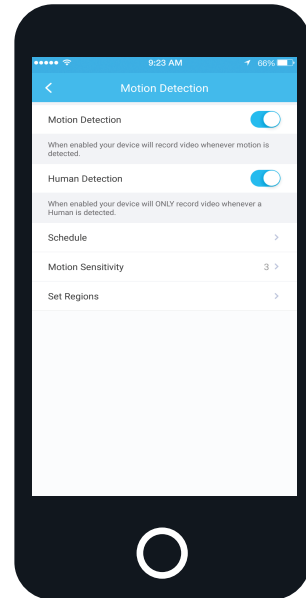


10

Motion and Human Detection

Motion Detection allows you to receive alerts and automatically record anytime your camera detects motion.

Enable **Human Detection** to only receive alerts when a human figure is detected.

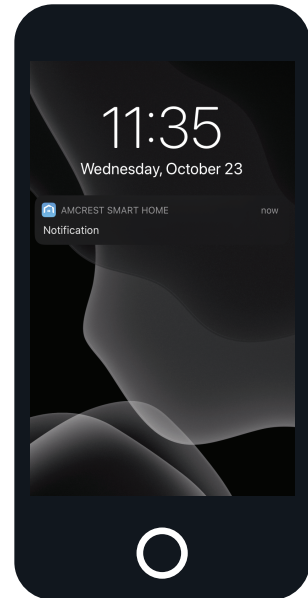


11

Push Notifications

Receive push notifications directly to your smartphone when motion is detected.

Note: To learn more visit: amcrest.com/support



12