

## RLC-510WA

### Smart 5MP 5/2.4 GHz Wi-Fi Security Camera

- Person/Vehicle Detection
- 5MP/4MP Super HD
- 2.4/5 GHz WiFi

## Specifications

Video & Audio	
Image Sensor	1/2.7" CMOS Sensor
Resolution	2560x1920 (5 Megapixels)@20fps
Lens	f=4.0mm fixed, F=2.0
Infrared Night Vision	Up to 12 meters (40ft); LED: 18pcs/14mil/850nm (Auto-switching with IR-cut filter)
Frame Rate	Main Stream: 2fps - 20fps(default: 20fps); Sub Stream: 4fps - 15fps(default: 10fps)
Code Rate	Main Stream: 2048Kbps -5120Kbps(default: 3072Kbps); Sub Stream: 128Kbps -1024Kbps(default: 1024Kbps)
Audio	Two-way audio
Power Requirements	
DC Power	DC 12V/1A
Interface	
Power Port	DC power port
Reset Button	YES

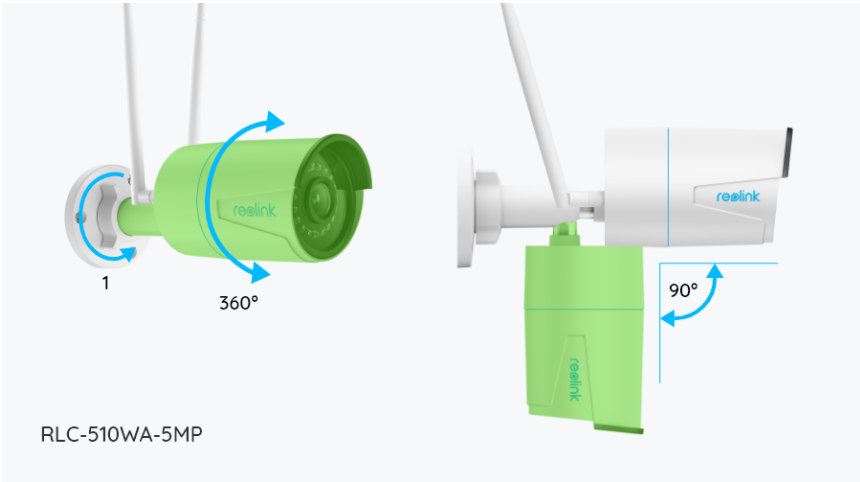
Ethernet Port	One 10M/100Mbps; RJ45
SD Card Slot	Supports Max. 512GB microSD card; Reolink NVR
Audio In/Out	Built-in Microphone and Speaker
<b>Wi-Fi</b>	
Wireless Standard	IEEE 802.11 ac/a/b/g/n
Operating Frequency	2.4GHz/5GHz
Wireless Security	WPA/WPA2
<b>Software</b>	
Browsers Supported	Edge, Chrome, Firefox, Safari
OS Supported	PC: Windows, Mac OS; Smartphone: iOS, Android
Protocols & Standards	HTTPS, SSL, TCP/IP, UDP, HTTP, IPv4, UPnP, RTSP, RTMP, ONVIF, SMTP, NTP, DHCP, DNS, DDNS, FTP, P2P
User Access	Max.20 users (1 admin & 19 user accounts); Max.12 simultaneous streams (2 main & 10 sub streams)
<b>Other Features</b>	
Smart Alarm	Motion detection; Person/vehicle/ animal detection
Record Mode	Motion-triggered recording (Default); Scheduled recording, 24/7 recording
Time Lapse	YES
Smart Home Compatibility	Google Assistant
<b>Working Environment</b>	
Operating Temperature	-10°C~+55°C (14°F~131°F)
Operating Humidity	20% ~ 85%
Weatherproof	IP67
<b>Mechanical</b>	
Dimension	Φ67x186mm

Weight	415g
<b>Warranty</b>	
Limited Warranty	2-year limited warranty. For support, visit <a href="https://support.reolink.com/hc/en-us/">https://support.reolink.com/hc/en-us/</a>

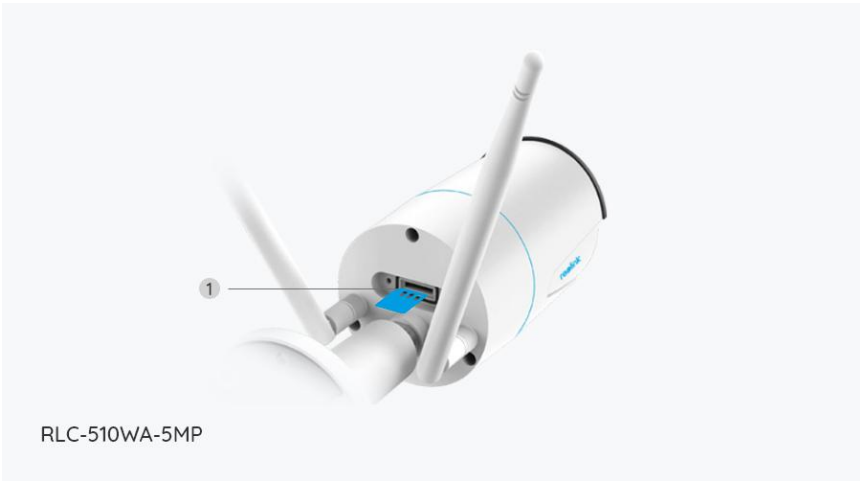
### Gallery & Specs



1. Antenna
2. Mount
3. Metal Aluminum Case
4. IR LED
5. High Definition Lens (f=4.0mm)
6. Daylight Sensor



1. Unscrew it (counter-clockwise) to loosen the bracket and adjust the camera in any direction.
2. After adjustment, twist it back to fix the camera.



1. micro SD Card Slot



1. Power
2. Reset Button
3. Network
4. Waterproof Lid

[www.reolink.com](http://www.reolink.com)